



ABSTRACT

PICTORIAL REPRESENTATION OF RECOMMENDED IMPROVEMENTS OF CHERTHALA KSRTC JUNCTION

For consideration by:

Cherthala Municipality & Kerala PWD

Submitted by

Cherthala Urban Edge (CUE) Forum

Date: March 2025



1 Introduction

This report is to bring to the attention of the Kerala PWD and Cherthala Municipal Authorities on the possibilities for improving Cherthala KSRTC Stand Junction. Following aspects has been considered in developing this layout:

- Safety and good walking spaces for pedestrians;
- Smooth traffic flow through an improved roundabout;
- Shifting of auto stand to commercial complex premises opposite the KSRTC stand; and
- Enhancement of temple pond to significantly improve the attraction of the entire area.
- Improvement of the corner space to further enhance the junction area

Pictorial representations are provided in the following section, a detailed design will be required for preparing good for construction drawings to proceed with implementation.

2 Three Dimensional Views

3D Visualisation of recommended improvement of Cherthala KSRTC Stand Junction



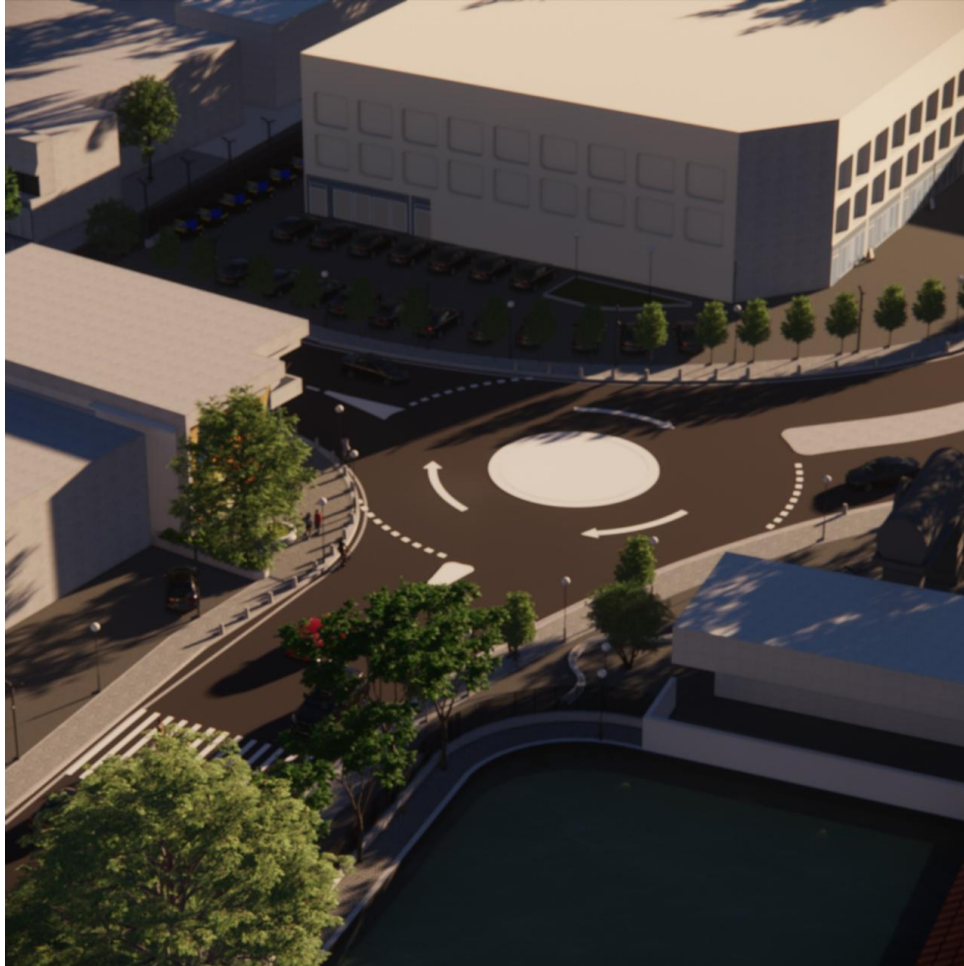
3D Visualisation of recommended improvement of Cherthala KSRTC Stand Junction



3D Visualisation of recommended improvement of Cherthala KSRTC Stand Junction



3D Visualisation of recommended improvement of Cherthala KSRTC Stand Junction



3D Visualisation of recommended improvement of Cherthala KSRTC Stand Junction

